

## Electrical Connection

Pre-Wired

Cable: PVC 4 x 0,75 mm<sup>2</sup>

Length: 1 m.

(Different cables or lengths, page 13)



## Operating Head Type

**G11 - Plain plunger**

**G1• - Roller plunger**

G12: metal roller  
G13: nylon roller

**G1• - Cross roller plunger**

G14: metal roller  
G15: nylon roller

Conformity /  $\rightarrow$  (N.C. contact with positive opening operation)

Max actuation speed [m/s]

Min. force [N] or torque [Nm]: actuation / positive opening operation

0,5  
15 / 30

0,1  
10 / 30

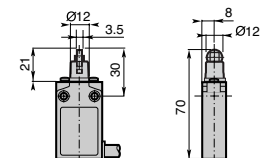
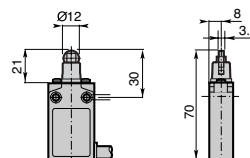
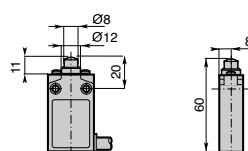
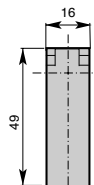
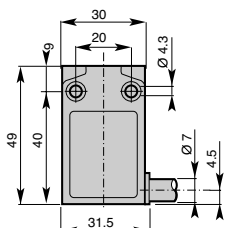
0,1  
10 / 30

## Additional Technical Datas

Z	Order Code	EP1G11Z	EP1G1•Z	EP1G1•Z
Snap Action Contacts (1NO + 1NC)	Operation Diagram			
X	Order Code	EP1G11X	EP1G1•X	EP1G1•X
Non overlapping Slow Action Contacts (1NO + 1NC)	Operation Diagram			

<b>Weight (packing per unit)</b>	<b>[kg]</b>	<b>0,125</b>	<b>0,130</b>	<b>0,130</b>
----------------------------------	-------------	--------------	--------------	--------------

## Dimensions (in mm)

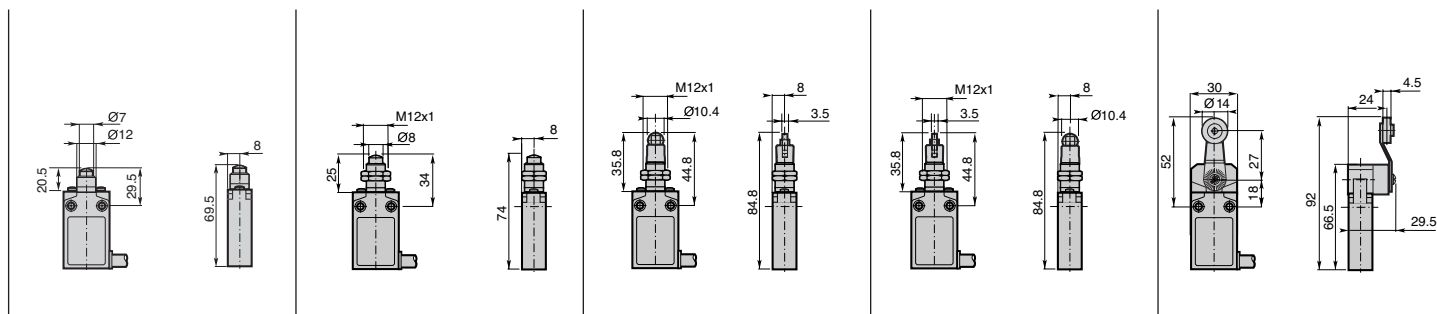




<b>G16 - Plain plunger with dust protection cup</b>	<b>G21 - Plain plunger with fixing nuts</b>	<b>G2• - Roller plunger with fixing nuts</b> G22: Metal roller G23: Nylon roller	<b>G2• - Cross roller plunger with fixing nuts</b> G24: metal roller G25: nylon roller	<b>G4• - Ø 14 roller lever</b> G41: nylon roller G42: metal roller G43: ball bearing
0,5 15 / 30	0,5 15 / 30	0,1 10 / 30	0,1 10 / 30	1,5 0,08 / 0,28

<b>EP1G16Z</b> 	<b>EP1G21Z</b> 	<b>EP1G2•Z</b> 	<b>EP1G2•Z</b> 	<b>EP1G4•Z</b> 
<b>EP1G16X</b> 	<b>EP1G21X</b> 	<b>EP1G2•X</b> 	<b>EP1G2•X</b> 	<b>EP1G4•X</b> 

<b>0,130</b>	<b>0,140</b>	<b>0,145</b>	<b>0,145</b>	<b>0,175</b>
--------------	--------------	--------------	--------------	--------------



# EP1G Limit Switches

Pre-wired - Double Insulation

Plastic Casing IP67 - 30 mm. width

## Electrical Connection

Pre-Wired

Cable: PVC 4 x 0,75 mm<sup>2</sup>

Length: 1 m.

(Different cables or lengths, page 13)



## Operating Head Type

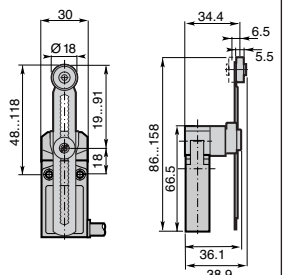
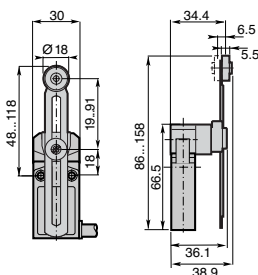
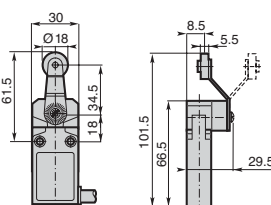
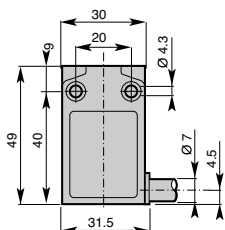
	<b>G45 - Ø 18 nylon roller lever</b>	<b>G51 - Adjustable lever with Ø 18 nylon roller</b>	<b>G5100 - Adjustable toothed lever (step 2 mm) with Ø 18 nylon roller</b>
Conformity / $\rightarrow$ (N.C. contact with positive opening operation)		$\rightarrow$	$\rightarrow$
Max actuation speed [m/s]	1,5	1,5	1,5
Min. force [N] or torque [Nm]: actuation / positive opening operation	0,08 / 0,28	0,08 / 0,28	0,08 / 0,28

## Additional Technical Datas

<b>Z</b> Snap Action Contacts (1NO + 1NC)	<b>Order Code</b> Operation Diagram	<b>EP1G45Z</b>	<b>EP1G51Z</b>	<b>EP1G5100Z</b>
<b>X</b> Non overlapping Slow Action Contacts (1NO + 1NC)	<b>Order Code</b> Operation Diagram	<b>EP1G45X</b>	<b>EP1G51X</b>	<b>EP1G5100X</b>

<b>Weight (packing per unit)</b>	<b>[kg]</b>	<b>0,180</b>	<b>0,190</b>	<b>0,190</b>
----------------------------------	-------------	--------------	--------------	--------------

## Dimensions (in mm)



# EP1G Limit Switches

Pre-wired - Double Insulation

Plastic Casing IP67 - 30 mm. width



<b>G61 - Nylon actuator with stainless steel spring</b>	<b>G70 - Adjustable rod lever</b> G71: stainless steel rod Ø3 G72: fiberglass rod Ø3 G75: square steel rod 3x3	<b>G70 - Adjustable Ø 6 rod lever</b> G73: nylon rod G74: fiberglass rod	<b>G92: Multidirectional nylon actuator with stainless steel spring</b>	<b>G93: Multidirectional actuator with stainless steel spring</b>
1,5 0,08 / -	1,5 0,08 / 0,28	1,5 0,08 / 0,28	1,0 0,10 / -	1,0 0,10 / -

<b>EP1G61Z</b> 	<b>EP1G7•Z</b> 	<b>EP1G7•Z</b> 	<b>EP1G92Z</b> 	<b>EP1G93Z</b> 
<b>EP1G61X</b> 	<b>EP1G7•X</b> 	<b>EP1G7•X</b> 		

<b>0,190</b>	<b>0,185</b>	<b>0,200</b>	<b>0,195</b>	<b>0,200</b>