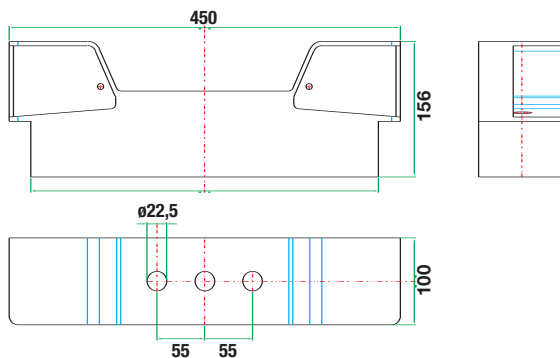
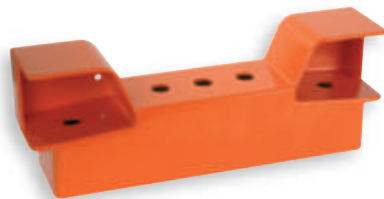




### GR2030

**Pulsantiera bimani  
in alluminio  
Aluminium two hand  
control station**

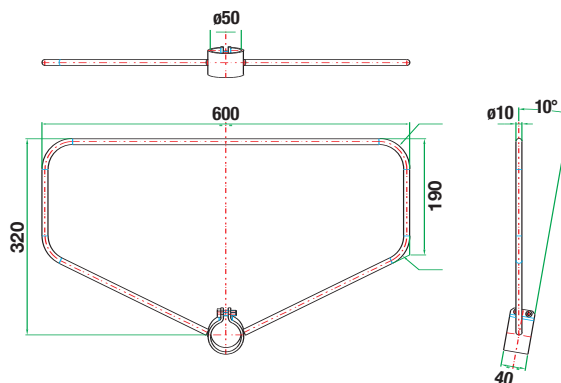


### GR2031

**Pulsantiera in alluminio  
per supporto regolabile  
Aluminium two hand  
control station suitable  
for adjustable support base**

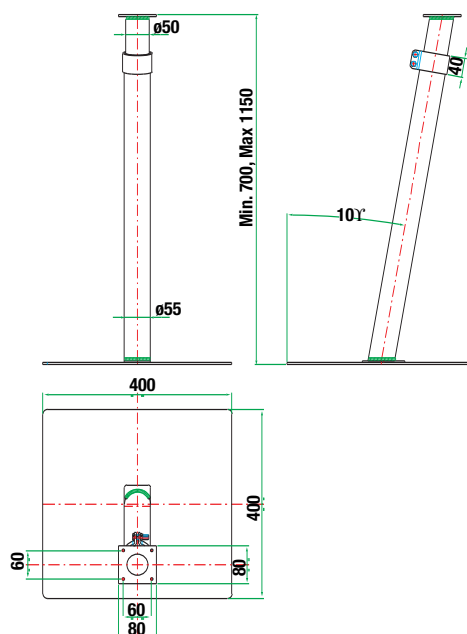
### AN003PE

**Anello di protezione  
Protection ring**



### GR2029

**Supporto regolabile  
Adjustable support base**



Pulsanti ed interruttori a pedale: consultare i nostri cataloghi relativi  
*Push buttons and foot switches: see our relative catalogues*

**COMEPI**

componenti elettrici per industria

COMEPI s.r.l. - 23807 Merate (Lecco) Italy - Via Martiri della Resistenza, 16 fraz. Brugarolo  
Telefono 0039-39-9903468 (4 linee r.a.) - Telefax 0039-39-9906203 - [www.comepi.it](http://www.comepi.it) - e-mail: [comepi@comepi.it](mailto:comepi@comepi.it)